

# PulsePen® Accessories

## PulsePen Holder



- Mechanical arm for the tonometer probe.
- It allows the recording of stable signals, free from artifacts relating to involuntary muscular tremors and variations on applied pressure.
- It allows the use of two tonometers simultaneously with a single operator (PulsePen WPP001-ETT).
- Ability to continuously record the pressure signal for long periods.



Carotid artery

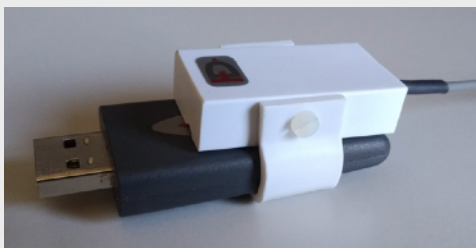


Femoral artery



Radial artery

## PulsePen Sync



The PulsePen Sync interface was designed to synchronize signals captured by the *PulsePen* system with those coming from a data acquisition system (DAQ). In this way, it's possible to extend the number and the typology of the processed signals guaranteeing the time alignment of all signals during the post-processing phase.

The interface takes power from a standard USB plug and is connected to the DAQ through a BNC connector.

The PulsePen Sync is equipped with an optical sensor to be mechanically coupled with the wRs1 module (USB unit) of the *PulsePen* system: It must be placed on the top of wRs1 so that the optical sensor is located over its LED. The optical coupling also guarantees the galvanic isolation between the *PulsePen* system and the DAQ system.

Furthermore, a second galvanic separation is obtained with the integrated power supply which adds isolation between the electrical connection to the DAQ (through the BNC connector) and the power supply coming from the USB plug.